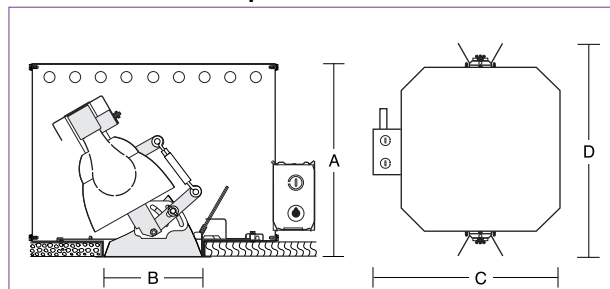


Dimensions and Lamps



Number	A Depth	B Aperture	C Width	D Length	Lamps*
C7344	13 1/4" 337mm	5 7/8" 149mm	17 1/2" 445mm	20 1/4" 514mm	100W A-19, BT-15 150W A-21 45-150W PAR-38
C7348	13 1/4" 337mm	7 1/4" 184mm	17 1/2" 445mm	20 1/4" 514mm	150-200W A-23 45-250W PAR-38

*Inside frosted or soft white recommended for A lamps. Factory sets C7344 focal position for A-21. Add ABT to catalog number for pre-set A-19 and BT-15 position or may be converted on the job as required. Focal position for C7348 is factory set for 200W A-23.

C7344 DISCONTINUED C24

See C7310, Page C22

C7348 DISCONTINUED

See C7311, Page C22

Sloped Ceilings

A Lamps to 200W

PAR Lamps to 250W

Optics and Applications

Multi-contoured primary reflectors maintain a constant focal position regardless of ceiling slope. Output is delivered through parabolic low brightness shielding cones with special contours for sloped ceilings. Use in flat or sloped ceilings to 30° for vertical downlighting. May be lamped with PAR lamps for performance flexibility.

Design Features

Kurt Versen directionals aim and lock with unprecedented ease. The rotation ring glides on ball bearing-like ridges and locks with a cam action lever. The conoid trim is retained by the rotation ring so it moves with the lamp to assure centerpoint alignment at any position. There is a quick macro tilt adjustment and precise turnbuckle controlled fine tuning if necessary. Full circle 360° rotation and angulation to 30°. The lampholder bracket adjusts for A-19 and BT-15, A-21 or PAR-38 lamps. Maximum ceiling thickness 7/8". Bottom service only.

Finish

Specular clear Alzak cones are standard. Optional colors and Softglow® finishes are available. The back of each cone is painted black to prevent reflected light from creating light streaks. Housing and structural parts are painted optical matte black. Steel parts are phosphate conditioned for corrosion resistance before painting.

General

Fixtures are pre-wired and thermally protected, UL and C-UL listed for eight wire 75°C branch circuit wiring. Union made IBEW. Luminaire Efficiency Ratings (LER) do not apply to directional fixtures.

Accessories

- R2 26" support rails.
 - R5 52" support rails.
 - RB Ridged baffle trim.
 - B Black cone.
 - G Gold cone.
 - H Mocha cone.
 - P Graphite cone.
 - S Softglow® finishes: add S before color letters. e.g. SW for Softglow® wheat cone, SC for Softglow® clear cone.
 - WT White trim flange.
 - WHT White complete trim.
 - STC Straight top cone.
 - T Titanium cone.
 - W Wheat cone.
 - Y Pewter cone.
 - Z Bronze cone.
- WRL Wattage restriction label, specify wattage.

Matching Units

- Low voltage Pages K3, K6, K7
- Directionals Pages C22, C23, C25
- Wall washers Pages E4, E5, E6, E8, E9, E10
- Surface cylinders Pages L1, L2, L3, L5
- Straight downlights Pages C6, C7, C8, C9, C10, C11, C12



Kurt Versen Company

Point Source Lighting
Westwood, New Jersey 07675

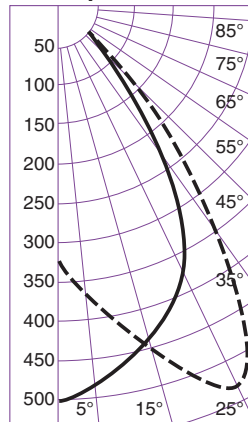
C24 C7344 C7348

Footcandle Values at Nadir

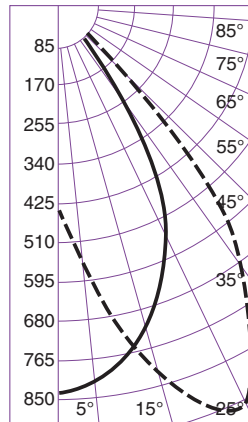
Distance	8'			10'			12'			15'		
	Nadir	10°	20°	Nadir	10°	20°	Nadir	10°	20°	Nadir	10°	20°
Lamps	FC	FC	Diam	FC	FC	Diam	FC	FC	Diam	FC	FC	Diam
C7344 100W A-19 IF	8	7	3'	5	4	4'	3	3	4'	2	2	3'
C7344 150W BT-15 HAL	13	12	3'	8	7	4'	5	5	4'	4	4	5'
C7344 100W PAR-38 FL	66	47	3'	42	30	4'	9	21	4'	6	15	5'

Distance	10'			15'			20'			25'		
	Nadir	10°	20°	Nadir	10°	20°	Nadir	10°	20°	Nadir	10°	20°
Lamps	FC	FC	Diam	FC	FC	Diam	FC	FC	Diam	FC	FC	Diam
C7348 200W A-21 IF	20	15	4'	9	7	5'	4	4	7'	2	2	9'
C7348 150W PAR-38 FL	30	24	4'	17	11	5'	7	8	6'	4	4	9'
C7348 250W PAR-38 FL	66	50	4'	28	22	5'	12	17	12'	7	8	9'

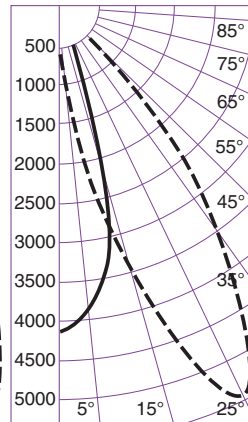
Candlepower Distribution



C7344 100W A-19 IF
Eff. 31% S/M .99



C7344 150W BT-15 Halogena
Eff. 29% S/M .90



C7344 100W PAR-38 FL
Eff. 58% S/M .50

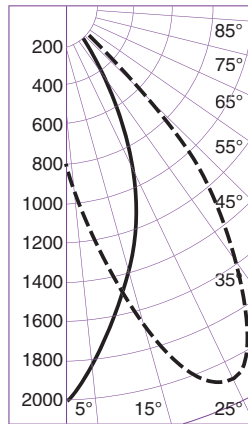
Candelas at Nadir

Vertical Angle	100W	150W	100W
	1690*	2650*	2070*
0	504	843	4194
5	488	831	3900
10	456	784	3126
15	432	712	2142
20	408	644	1111
25	367	548	433
30	301	435	167
35	217	283	62
40	137	135	23
45	66	68	9
50	21	23	6
55	4	6	0
60	1	0	0
65	0	0	0
70	0	0	0
75	0	0	0
80	0	0	0
85	0	0	0
90	0	0	0

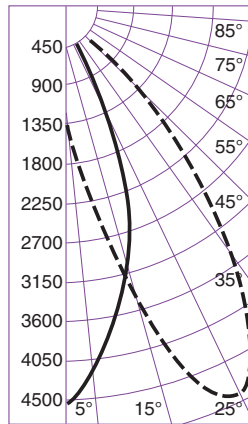
° Vertical Angles
* Initial Lamp Lumens

Notes

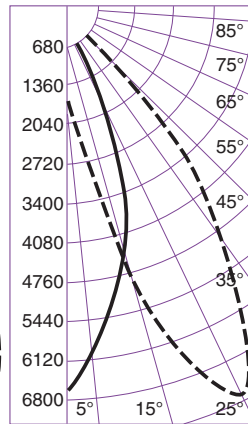
- Data with clear specular cones.
- Colored cone multipliers vary with lamp source, beam orientation and degree of angulation. Contact the factory for specific data.
- Candlepower distribution curves: solid lines show horizontal distribution at nadir, dotted lines show horizontal distribution at 25° lamp tilt.
- Pattern diameters are determined from each side of nadir with 0° lamp tilt. The diameter includes both sides, so a 10" diameter represents a total 20" pattern width at the floor. Footcandles are measured at the diameter edge. Tilting the lamp changes all data.
- Average Luminance Method brightness data are inaccurate for downlights. They are calculations created for troffers. We recommend the stricter standard of Maximum Brightness Method point data from direct photometer readings. They approximate what the human eye perceives when evaluating glare. Further discussion in Z section brochure Z1.



C7348 200W A-21 IF
Eff. 35% S/M .68



C7348 150W PAR-38 FL
Eff. 77% S/M .63



C7348 250W PAR-38 FL
Eff. 78% S/M .63

Vertical Angle	200W	150W	250W
	3910*	2500*	3600*
0	2008	4561	6610
5	1840	4099	5939
10	1620	3595	5211
15	1380	2993	4338
20	1128	2338	3378
25	912	1334	1936
30	712	391	568
35	528	181	264
40	281	62	88
45	65	13	27
50	21	0	7
55	0	0	0
60	0	0	0
65	0	0	0
70	0	0	0
75	0	0	0
80	0	0	0
85	0	0	0
90	0	0	0

° Vertical Angles
* Initial Lamp Lumens

Brightness

Number	Lamps	85°	75°	65°	55°	45°
C7344	100W A-19 IF	8	19	31	86	1098
	150W BT-15/HAL/SW	10	23	37	101	1296
	100W PAR-38 FL	8	21	35	96	1123

Number	Lamps	85°	75°	65°	55°	45°
C7348	200W A-21 IF	6	11	29	95	850
	150W PAR-38 FL	7	12	21	65	714
	250W PAR-38 FL	8	15	26	87	1023

Data in footlamberts. Photometer readings, Maximum Brightness Method. See note 5. Data collected with lamps tilted 20°.