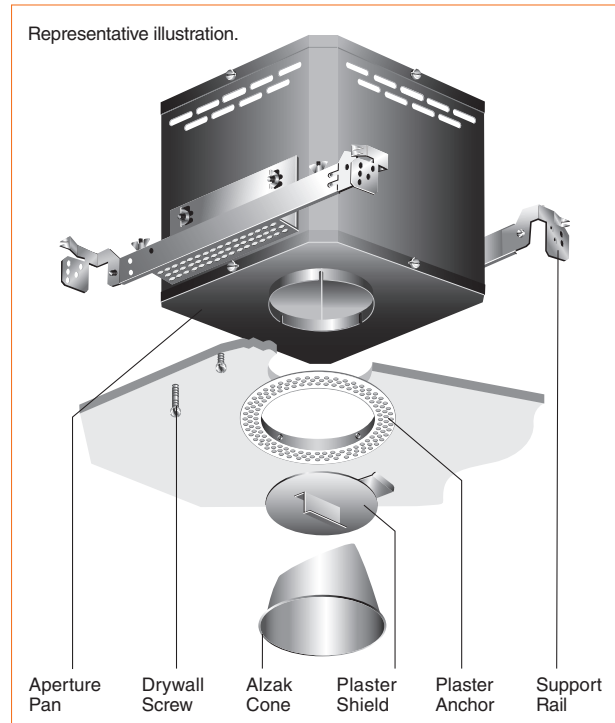


Representative illustration.



# C7310FM

**Flush Mount Directional  
PAR Lamps to 250W  
5 7/8" Round Conoid Aperture**

### Flush Mount

Kurt Versen's flush mount fixtures eliminate overlapping flanges and lock into the ceiling for a unique, finished appearance. A clean, uncluttered ceiling emphasizes the attention to detail, enhancing the impact of the interior environment. It is a factory installed option with a proven installation technique.

### Optics and Applications

Illuminate vertical or horizontal surfaces with low aperture brightness and excellent lamp shielding. Use for vertical downlighting in sloped ceilings or for directional highlighting.

### Design Features

This directional fixture rotates 360° and tilts 45°. Flush mount design resists cracking and chipping by mechanically fastening fixture to drywall. To simplify installation, three adjustment mechanisms adapt the fixture to ceiling conditions. Adjustable mounting rails fit different support systems and accommodate ceiling thicknesses from 3/8" to 7/8". Maximum extension is 26". Top or bottom service.

### Finish

Specular clear Alzak cones are standard. Optional colors and Softglow® finishes are available. The back of each cone is painted black to prevent light streaks. Housing and structural parts are painted optical matte black.

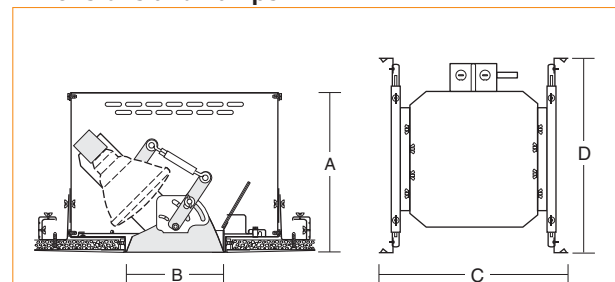
### General

Fixture is pre-wired and thermally protected, UL and C-UL listed for damp location and eight wire 75°C branch circuit wiring. Union made IBEW.

### Accessories

- B Black cone.
- G Gold cone.
- H Mocha cone.
- P Graphite cone.
- T Titanium cone.
- W Wheat cone.
- Y Pewter cone.
- Z Bronze cone.
- UV Ultraviolet filter.\*
- HL Hexcell louver.\*
- LL Linear lens.\*
- LP Large prism lens.\*
- MP Microprism lens.\*
- WR White cone return.
- WHT White complete trim.
- WRL Wattage restriction label, specify wattage.

### Dimensions and Lamps



Number	A Depth	B Aperture	C Width	D Length	Lamp
C7310FM	10 1/8" 257mm	5 7/8" 149mm	16" 406mm	15 1/2" 394mm	50-75W PAR-30 45-250W PAR-38

- STC Straight top cone, restricts aiming angle to 10°
- S Softglow® finishes: add S before color letters. e.g. SW for Softglow® wheat cone, SC for Softglow® clear cone.
- FR Frosted lens. Example: LLFR for linear lens frosted.\*
- FMW Flush mount wood, contact the factory.
- FF30-2 Accessory holder for PAR-30. Holds two accessories.
- FF38-1 Accessory holder for PAR-38. Holds one accessory, 10° to 45° angulation only.
- FF38-2 Accessory holder for PAR-38. Holds two accessories, 10° to 45° angulation only. A cut down cone is required. Specify CDC.

\*Requires accessory holder.

### Matching Units

Downlights  
Wall Washers

Section FM 1  
Section FM 3

# FM C7310FM

## 2-6

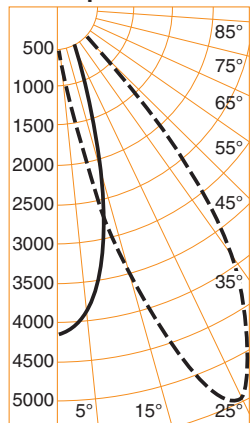
### Footcandle Values at Nadir

Distance	5'			10'			15'			20'										
	Nadir	10°	15°	Nadir	10°	15°	Nadir	10°	15°	Nadir	10°	15°								
Lamps	FC	FC	Diam	FC	FC	Diam	FC	FC	Diam	FC	FC	Diam								
C7310FM 75W PAR-30 NFL	79	61	2'	45	3'	20	15	4'	11	5'	9	7	5'	5	4	7'	3	11'		
C7310FM 100W PAR-38 WFL	168	119	2'	77	3'	42	30	4'	19	5'	19	13	5'	9	8'	10	7	7'	5	11'
C7310FM 250W PAR-38 FL	254	224	2'	190	3'	63	56	4'	48	5'	28	25	5'	21	8'	16	14	7'	12	11'

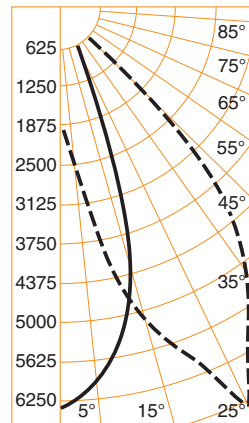
Distance	5'			10'			15'			20'										
	Nadir	5°	10°	Nadir	5°	10°	Nadir	5°	10°	Nadir	5°	10°								
Lamps	FC	FC	Diam	FC	FC	Diam	FC	FC	Diam	FC	FC	Diam								
C7310FM 75W PAR-30 NSP	168	145	1'	85	2'	42	36	2'	21	4'	19	16	3'	9	5'	11	9	3'	5	7'
C7310FM 100W PAR-38 SP	599	402	1'	116	2'	150	100	2'	29	4'	67	45	3'	13	5'	37	25	3'	7	7'
C7310FM 250W PAR-38 SP	680	486	1'	266	2'	170	122	2'	67	4'	76	54	3'	30	5'	43	30	3'	17	7'

See note 4.

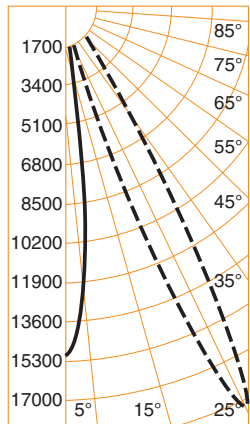
### Candlepower Distribution



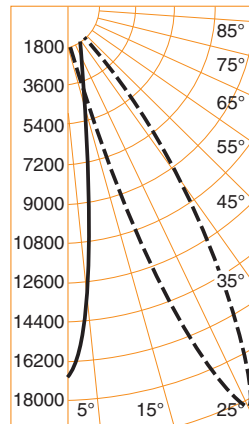
C7310FM 100W PAR-38 WFL  
Eff. 58% S/M .59



C7310FM 250W PAR-38 FL  
Eff. 64% S/M .59



C7310FM 100W PAR-38 SP  
Eff. 56% S/M .24



C7310FM 250W PAR-38 SP  
Eff. 69% S/M .29

### Candelas at Nadir

	100W	250W
o	2070*	3600*
0	4194	6346
5	3900	5875
10	3126	5273
15	2142	4087
20	1111	2475
25	433	1194
30	167	400
35	62	96
40	23	28
45	9	0
50	6	0
55	0	0
60	0	0
65	0	0
70	0	0
75	0	0
80	0	0
85	0	0
90	0	0

o Vertical Angles  
\* Initial Lamp Lumens

	100W	250W
o	2070*	3600*
0	14976	17005
5	10165	12294
10	3033	6966
15	987	3683
20	352	1639
25	191	650
30	113	306
35	42	127
40	16	43
45	5	17
50	0	4
55	0	0
60	0	0
65	0	0
70	0	0
75	0	0
80	0	0
85	0	0
90	0	0

o Vertical Angles  
\* Initial Lamp Lumens

### Notes

- 1 Data with clear specular cones.
- 2 Colored cone multipliers vary with lamp source, beam orientation and degree of angulation. Contact the factory for specific data.
- 3 Candlepower distribution curves: solid lines show horizontal distribution at nadir, dotted lines show horizontal distribution at 25° lamp tilt.
- 4 Pattern diameters are determined from each side of nadir with 0° lamp tilt. The diameter includes both sides, so a 10° diameter represents a total 20° pattern width at the floor. Footcandles are measured at the diameter edge. Tilting the lamp changes all data.

### Brightness

Number	Lamps	85°	75°	65°	55°	45°
C7310FM	75W PAR-30 NFL	7	26	43	88	199
	100W PAR-38 WFL	8	21	35	96	1123
	250W PAR-38 FL	19	49	84	190	1379

Data in footlamberts. Photometer readings, Maximum Brightness Method.  
Data collected with lamps tilted 25°.