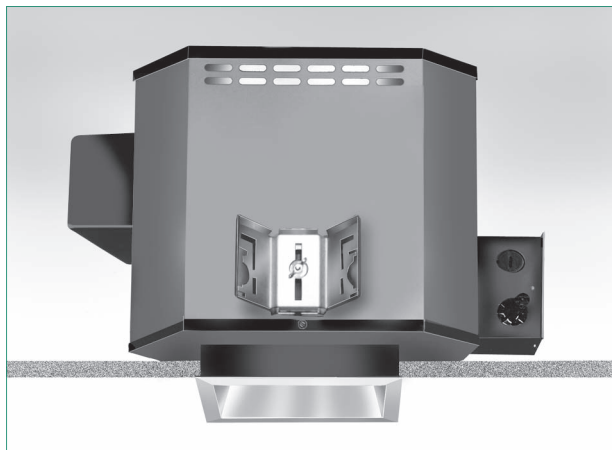
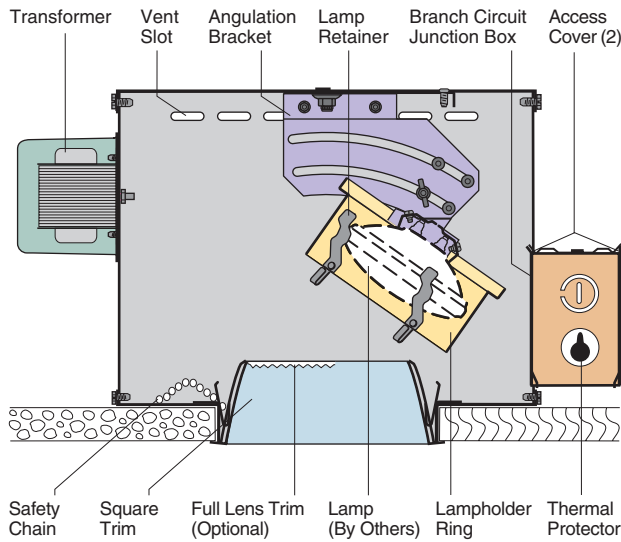


H8636

Directional Downlight
PAR-36, AR111 Low Voltage Lamps
6" Square Parabolic Trim



Optics and Applications

The parabolic trim contour offers shielding and controls brightness, even when at maximum lamp angulation. Use to highlight merchandise, art and general points of interest. Suitable for damp locations.

Design Features

The lamp assembly rotates 360°, tilts 35° and locks in any selected position. The lampholder ring accepts one or two accessories. A sturdy steel housing protects all internal components and is vented for air flow cooling. The trim is stabilized to prevent racking. It is held to the ceiling by constant tension stainless steel springs. Maximum ceiling thickness 1". Top or bottom service.

Finish

Housing and structural parts are painted matte black to suppress stray light leaks. Standard trim is anodized Softglow® clear. Special finishes, textures and colors are available, see below under Accessories.

Transformer

Each fixture is supplied with a transformer capable of accommodating low voltage lamps up to 75W. The primary lead is 120V with a 12V or 5.5V secondary. The transformer is rated 180°C, Class H with a built-in 150° resetting thermal link fuse. It can be lowered through the aperture for service. Maximum fixture draw is 85W.

Trim Textures

Textured trims create a subtle new aperture appearance. Select among different embossed patterns to match the ambiance of the space being illuminated. Refer to Squares brochure for descriptive photos.

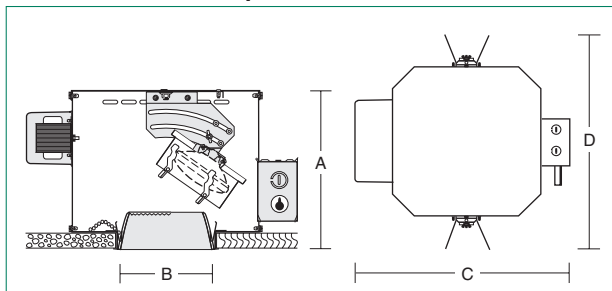
General

Fixtures are pre-wired, thermally protected, UL and C-UL listed for eight wire 75°C branch circuit wiring. Union made IBEW. Luminaire Efficiency Ratings (LER) do not apply to directional fixtures.

Accessories

- R2 26" support rails.
- R5 52" support rails.
- SB Softglow black.
- SG Softglow gold.
- SH Softglow mocha
- SP Softglow graphite.
- ST Softglow titanium.
- SW Softglow wheat.
- SY Softglow pewter.
- SZ Softglow bronze.
- BR Bright trim finish.
- FR Frosted lens, specify lens type.
- V277 277 volt primary transformer.
- FLT6 Full lens trim, specify lens type, e.g. H8636-FLT6LL.
- WRL Wattage restriction label, specify wattage.
- For color filters, pattern control lenses, light block screens, UV filters and other accessories, contact the factory.
- WT White trim flange.
- WHT White complete trim.
- BP Ball Peen texture.
- CG Corrugated texture.
- DS Distressed texture.
- WV Woven texture.
- HL Hexcell louver.
- LL Linear spread lens.
- LP Large prism lens.
- MP Microprism lens.
- DP Fixed downlight position.

Dimensions and Lamps



Number	A Depth	B Aperture	C Width	D Length	Lamps
H8636	10 3/4" 273mm	6" sq. 153mm	18 1/2" 470mm	18 1/2" 470mm	12V or 5.5V 25-75W PAR-36 35-75W AR111

Matching Square Units *

- MR-16 lamps [Page H5](#)
- Compact fluorescent [Pages H22, H23](#)
- Directional [Page H9, H27](#)
- Halogena, A lamps [Page H10](#)
- Tungsten halogen [Page H11](#)
- Metal halide [Pages H26, H27, H28](#)
- Wall washer [Page H38](#)

* Click for link to pages in blue.

H6 H8636

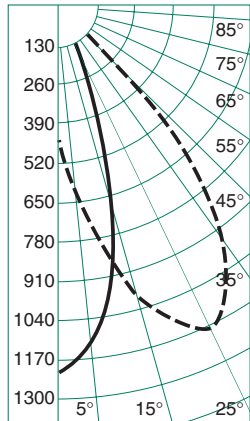
Footcandle Values at Nadir

Distance	10'			15'			20'			25'		
	Size of Light	FC at Center	FC at Edge	Size of Light	FC at Center	FC at Edge	Size of Light	FC at Center	FC at Edge	Size of Light	FC at Center	FC at Edge
25W PAR-36 WFL	17' x 14'	8	1.0	25' x 21'	3	.3	33' x 28'	2	.2	42' x 35'	1	.1
25W PAR-36 NSP	3' x 2'	37	4.0	5' x 4'	16	2.0	6' x 5'	9	1.0	8' x 7'	6	1.0
50W PAR-36 WFL	17' x 14'	12	1.0	25' x 21'	5	.5	33' x 28'	3	.3	42' x 35'	2	.2
50W PAR-36 NSP	4' x 3'	85	9.0	6' x 5'	38	4.0	9' x 7'	21	2.0	11' x 8'	14	1.0

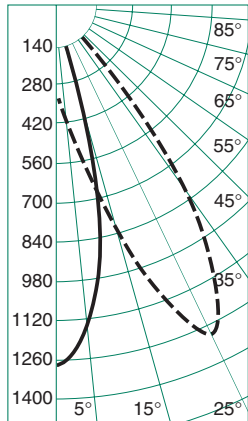
Distance	10'			15'			20'			25'										
	Nadir	5°	10°	Nadir	5°	10°	Nadir	5°	10°	Nadir	5°	10°								
Lamps	FC	FC	Diam	FC	FC	Diam	FC	FC	Diam	FC	FC	Diam								
35W AR111/FL/25°	13	11	2'	8	4'	6	5	3'	4	5'	3	3	3'	2	7'	2	2	4'	1	9'
35W AR111/SP/8°	99	26	2'	9	4'	44	12	3'	4	5'	25	7	3'	2	7'	16	4	4'	1	9'
75W AR111/FL/25°	43	37	2'	27	4'	19	17	3'	12	5'	11	9	3'	7	7'	7	6	4'	4	9'
75W AR111/SP/8°	258	95	2'	39	4'	115	42	3'	17	5'	65	24	3'	10	7'	41	15	4'	6	9'

See note 4.

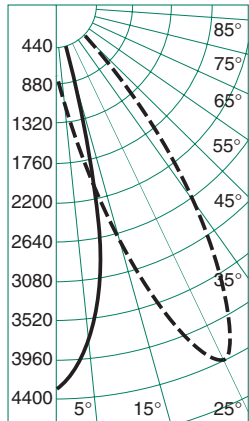
Candlepower Distribution



H8636 50W PAR-36 FL
Eff. 44% S/M .55



H8636 35W AR111 FL
Eff. 55% S/M .40



H8636 75W AR111 FL
Eff. 51% S/M .40

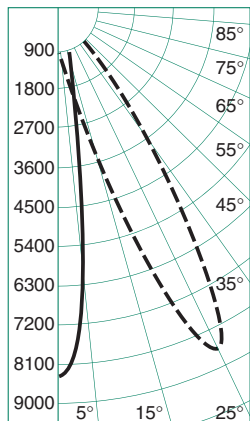
Candelas at Nadir

Vertical Angles	50W	35W	75W
	900*	350*	1250*
0	1219	1287	4291
5	1109	1129	3762
10	1001	845	2818
15	699	265	883
20	375	47	155
25	185	11	37
30	71	0	16
35	22	0	0
40	9	0	0
45	0	0	0
50	0	0	0
55	0	0	0
60	0	0	0
65	0	0	0
70	0	0	0
75	0	0	0
80	0	0	0
85	0	0	0
90	0	0	0

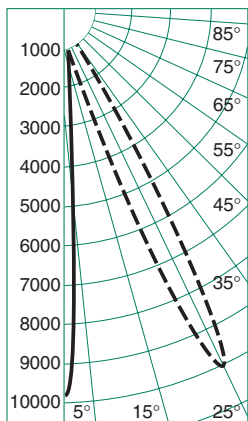
° Vertical Angles
* Initial Lamp Lumens

Notes

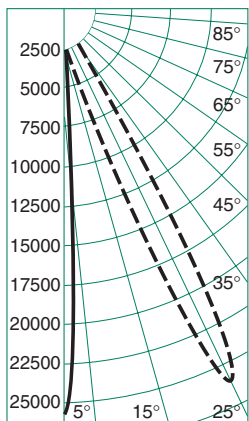
- Data with a clear Softglow® trim.
- Colored cone multipliers vary with lamp source, beam orientation and degree of angulation. Contact the factory for specific data.
- Candlepower distribution curves: solid lines show horizontal distribution at nadir, dotted lines show horizontal distribution at 25° lamp tilt.
- Pattern diameters are determined from each side of nadir with 0° lamp tilt. The diameter includes both sides, so a 10" diameter represents a total 20° pattern width at the floor. Footcandles are measured at the diameter edge. Tilting the lamp changes all data.
- Average Luminance Method brightness data are inaccurate for downlights. We recommend Maximum Brightness Method point data from direct photometer readings. They approximate what the human eye perceives when evaluating glare.



H8636 50W PAR-36 NSP
Eff. 94% S/M .28



H8636 35W AR111 SP
Eff. 82% S/M .11



H8636 75W AR111 SP
Eff. 83% S/M .13

Vertical Angles	50W	35W	75W
	920*	350*	1250*
0	8465	9904	25809
5	6346	2646	9621
10	3221	952	4098
15	1068	46	166
20	229	12	45
25	39	0	9
30	9	0	0
35	0	0	0
40	0	0	0
45	0	0	0
50	0	0	0
55	0	0	0
60	0	0	0
65	0	0	0
70	0	0	0
75	0	0	0
80	0	0	0
85	0	0	0
90	0	0	0

° Vertical Angles
* Initial Lamp Lumens

Brightness

Number	Lamps	85°	75°	65°	55°	45°
H8636	25W PAR-36 WFL	8	22	43	88	183
	50W PAR-36 WFL	12	32	64	127	261

Number	Lamps	85°	75°	65°	55°	45°
H8636	35W AR111 FL	3	9	16	34	75
	75W AR111 FL	9	28	56	115	260

Data in footlamberts. Photometer readings, Maximum Brightness Method. See note 5. Data collected with lamps tilted 25°.